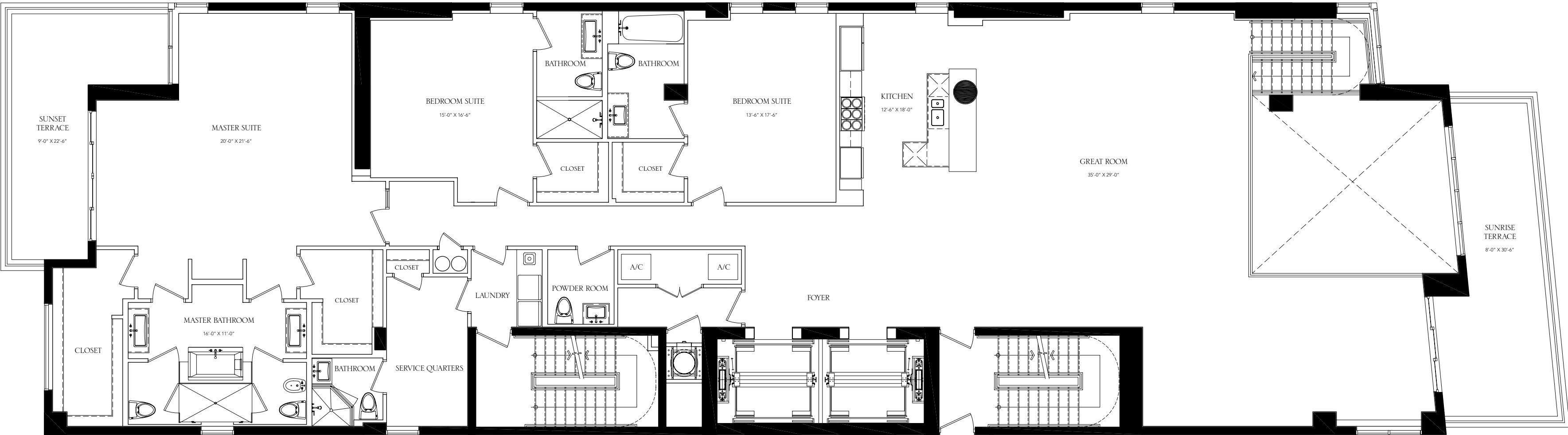




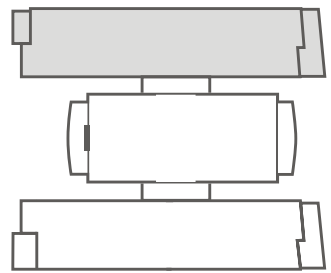
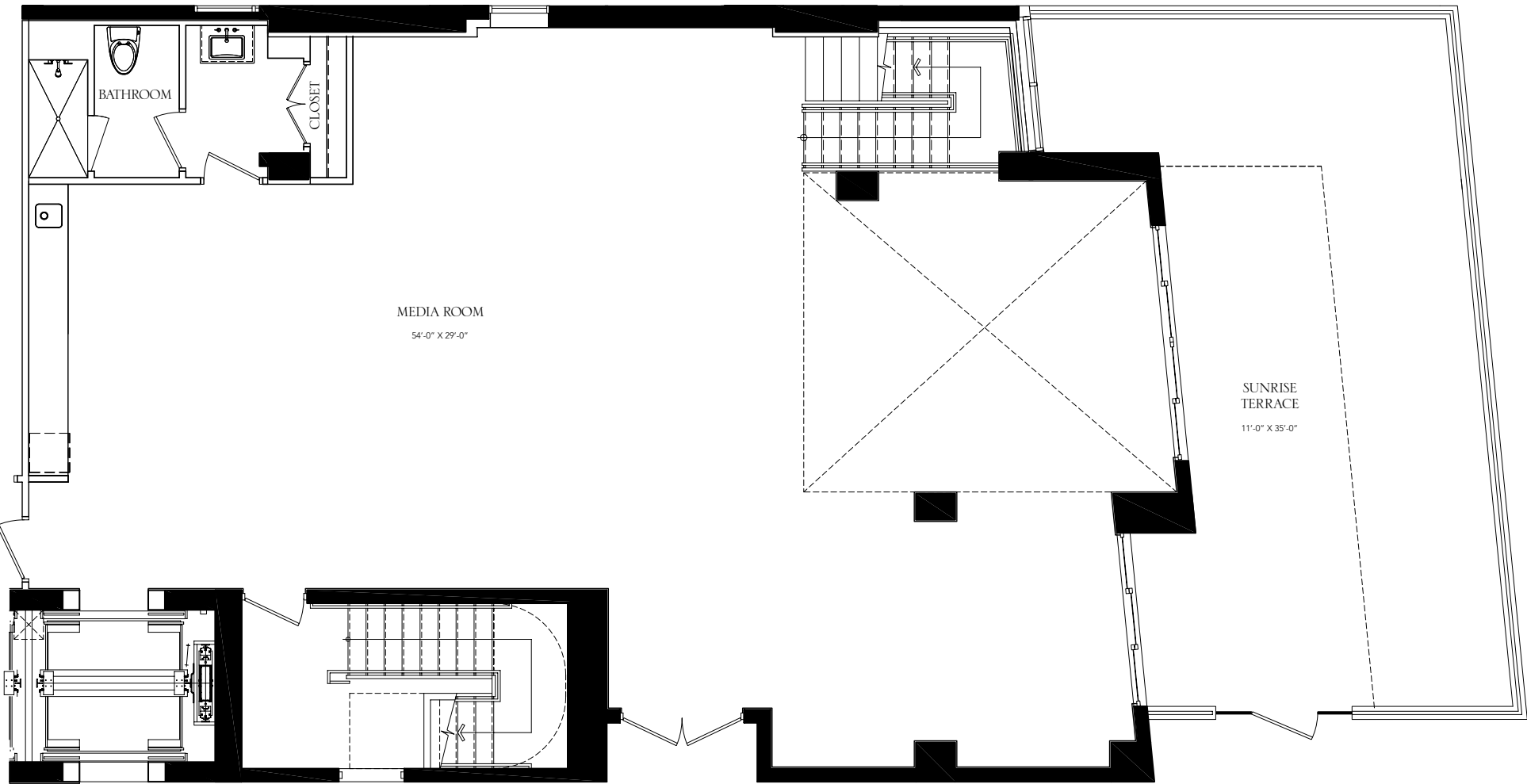
BEACH HOUSE 201

4	BEDROOMS	6 1/2	BATHROOMS PLUS MEDIA ROOM
INTERIOR		6,009 SF / 558 M <sup>2</sup>	
BALCONIES		1,188 SF / 110 M <sup>2</sup>	
TOTAL		7,197 SF / 668 M <sup>2</sup>	

UPPER PLAN



LOWER PLAN



KEY PLAN - UNIT LOCATIONS

ATLANTIC OCEAN

ATLANTIC OCEAN

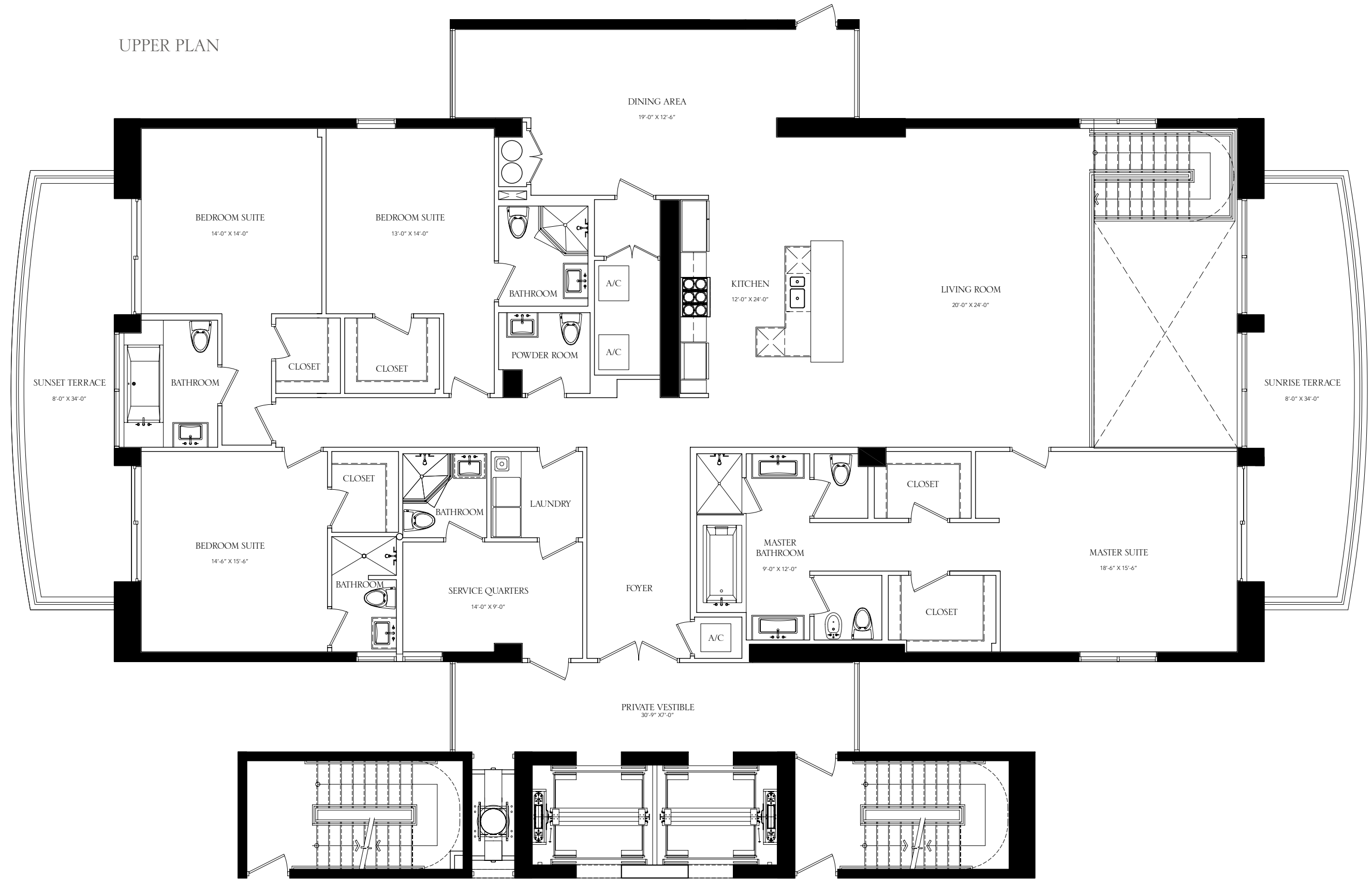
Note to Potential Purchasers of Ocean House, A Condominium: Any marketing materials you may have received, including this brochure, are preliminary in nature and are for promotional purposes only. Seller reserves the right to modify, revise or withdraw any or all of same in its sole discretion and without prior notice. Purchaser may not rely upon any such marketing materials in connection with the purchase of a Unit at Ocean House, A Condominium.



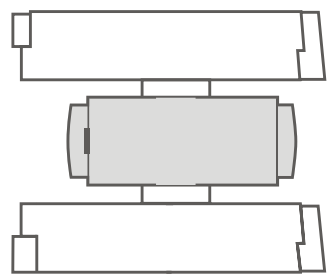
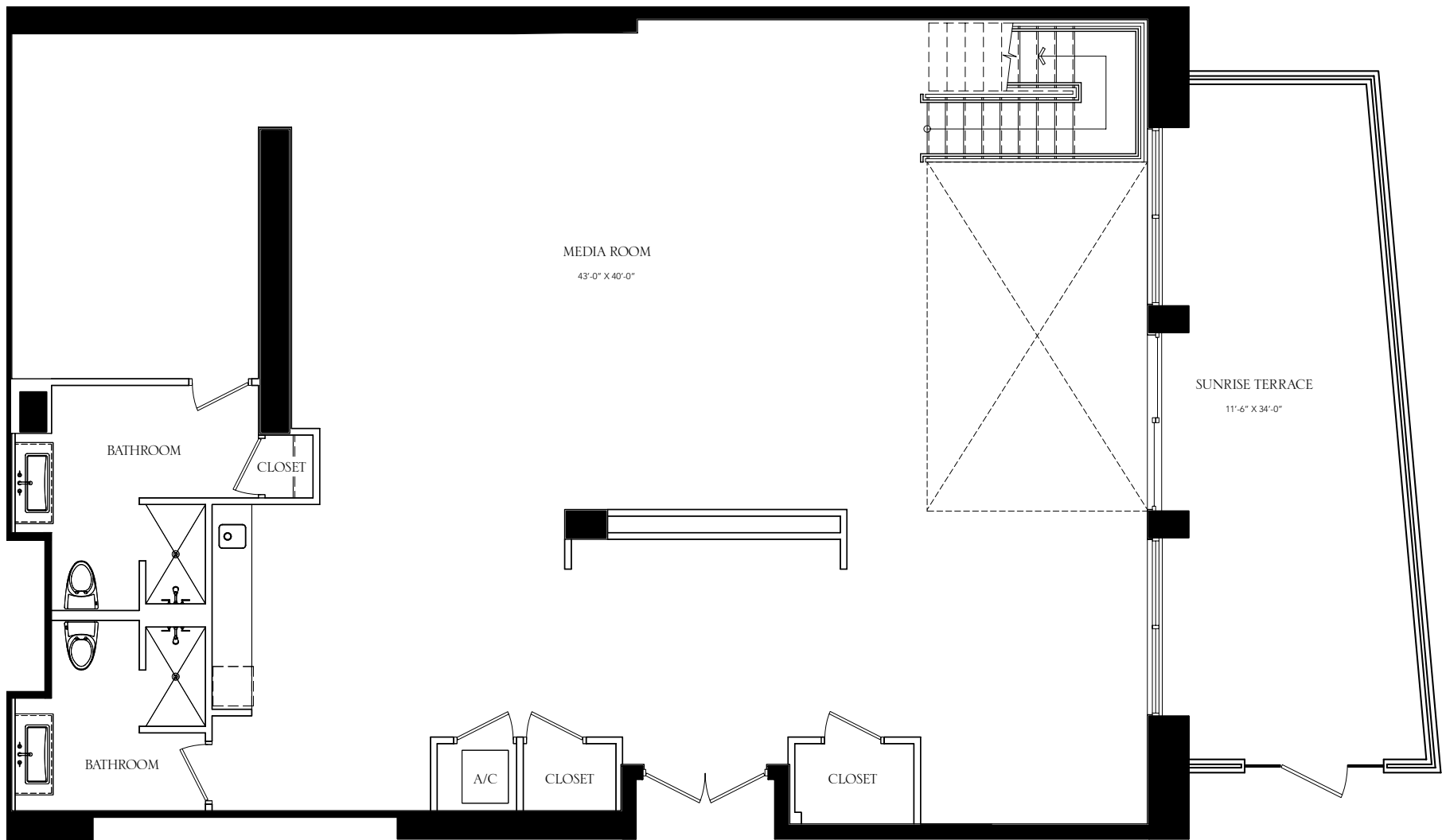
BEACH HOUSE 202

5	BEDROOMS	7 1/2	BATHROOMS PLUS DEN
INTERIOR		6,379 SF / 593 M <sup>2</sup>	
BALCONIES		989 SF / 92 M <sup>2</sup>	
TOTAL		7,368 SF / 685 M <sup>2</sup>	

UPPER PLAN



LOWER PLAN



KEY PLAN - UNIT LOCATIONS

ATLANTIC OCEAN

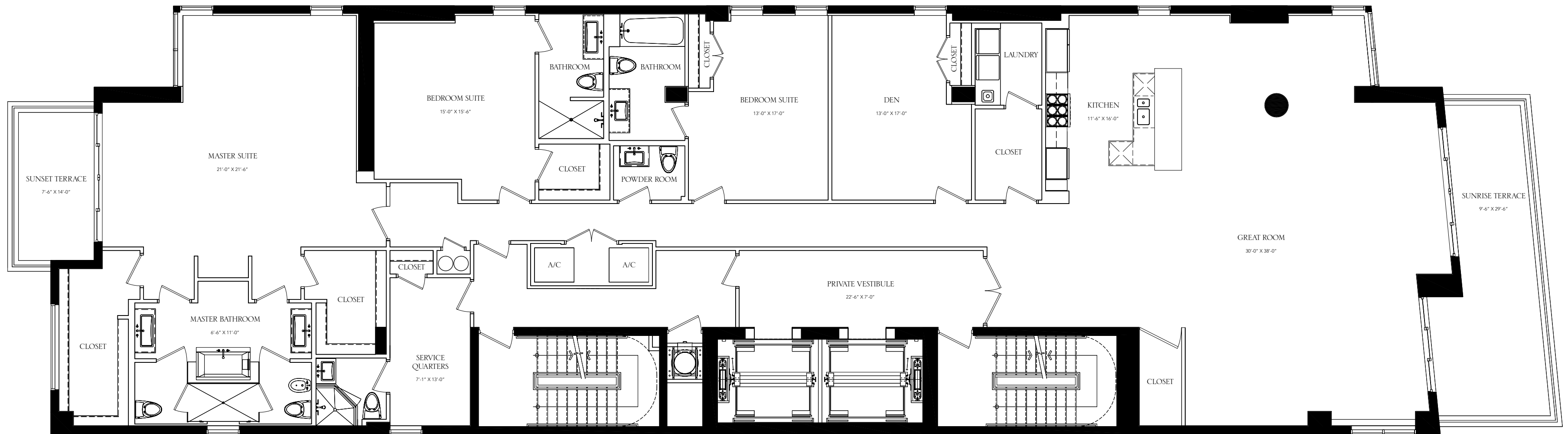
ATLANTIC OCEAN

Note to Potential Purchasers of Ocean House, A Condominium: Any marketing materials you may have received, including this brochure, are preliminary in nature and are for promotional purposes only. Seller reserves the right to modify, revise or withdraw any or all of same in its sole discretion and without prior notice. Purchaser may not rely upon any such marketing materials in connection with the purchase of a Unit at Ocean House, A Condominium.

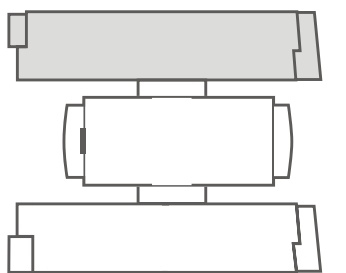


GRAND RESIDENCE 301

4	BEDROOMS	5 1/2	BATHROOMS PLUS DEN
INTERIOR			4,344 SF / 371.80 M <sup>2</sup>
BALCONIES			407 SF / 37.81 M <sup>2</sup>
TOTAL			4,751 SF / 409.61 M <sup>2</sup>



ATLANTIC OCEAN



KEY PLAN - UNIT LOCATIONS

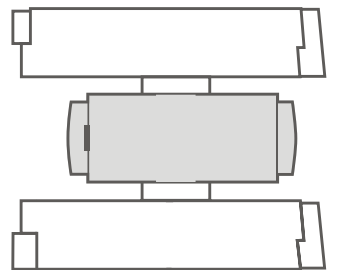
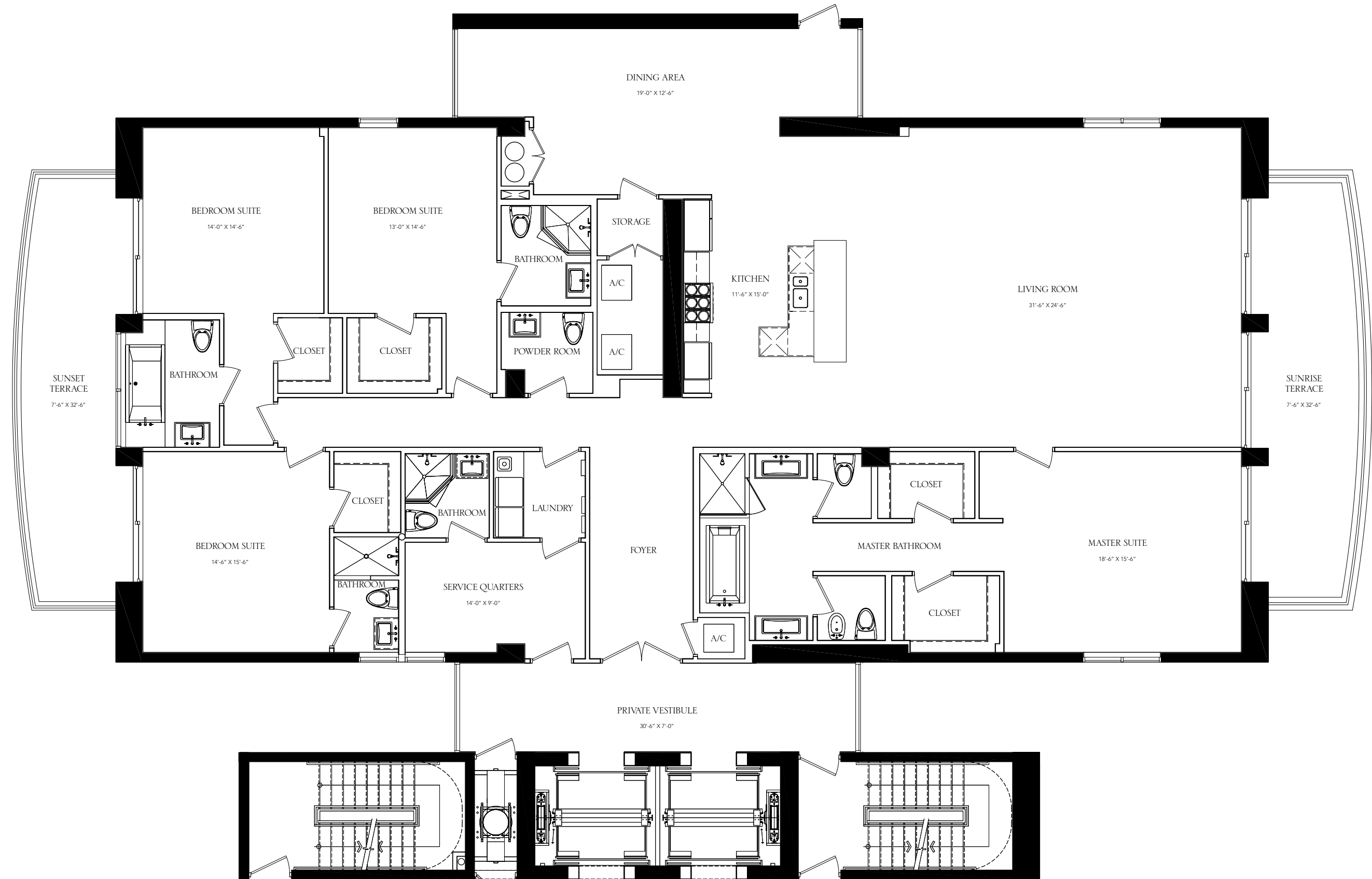
ATLANTIC OCEAN

Note to Potential Purchasers of Ocean House, A Condominium: Any marketing materials you may have received, including this brochure, are preliminary in nature and are for promotional purposes only. Seller reserves the right to modify, revise or withdraw any or all of same in its sole discretion and without prior notice. Purchaser may not rely upon any such marketing materials in connection with the purchase of a Unit at Ocean House, A Condominium.



# GRAND RESIDENCE 302-602

5	BEDROOMS	6 1/2	BATHROOMS
INTERIOR		4,178 SF / 388 M <sup>2</sup>	
BALCONIES		561 SF / 52 M <sup>2</sup>	
TOTAL		4,739 SF / 440 M <sup>2</sup>	



KEY PLAN - UNIT LOCATIONS

ATLANTIC OCEAN

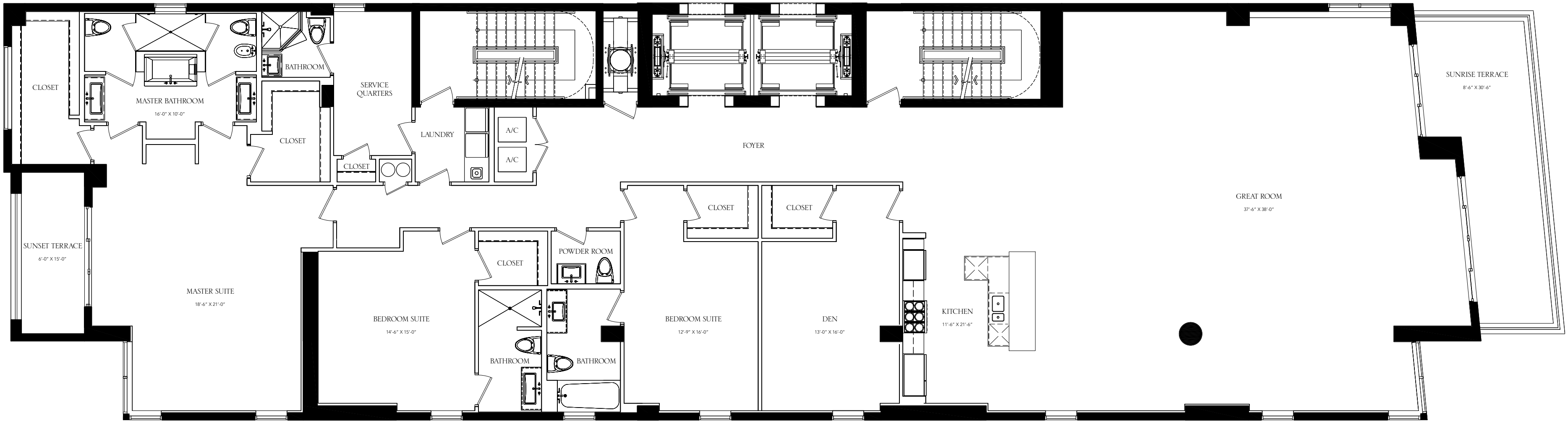
ATLANTIC OCEAN

Note to Potential Purchasers of Ocean House, A Condominium: Any marketing materials you may have received, including this brochure, are preliminary in nature and are for promotional purposes only. Seller reserves the right to modify, revise or withdraw any or all of same in its sole discretion and without prior notice. Purchaser may not rely upon any such marketing materials in connection with the purchase of a Unit at Ocean House, A Condominium.

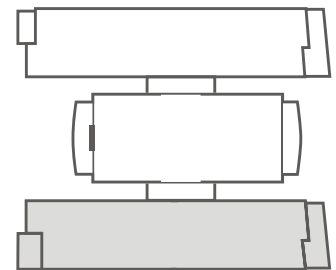


GRAND RESIDENCE 303-403

4	BEDROOMS	5 1/2	BATHROOMS PLUS DEN
INTERIOR		4,654 SF / 432.37 M <sup>2</sup>	
BALCONIES		398 SF / 36.98 M <sup>2</sup>	
TOTAL		5,052 SF / 469.35 M <sup>2</sup>	



ATLANTIC OCEAN



ATLANTIC OCEAN



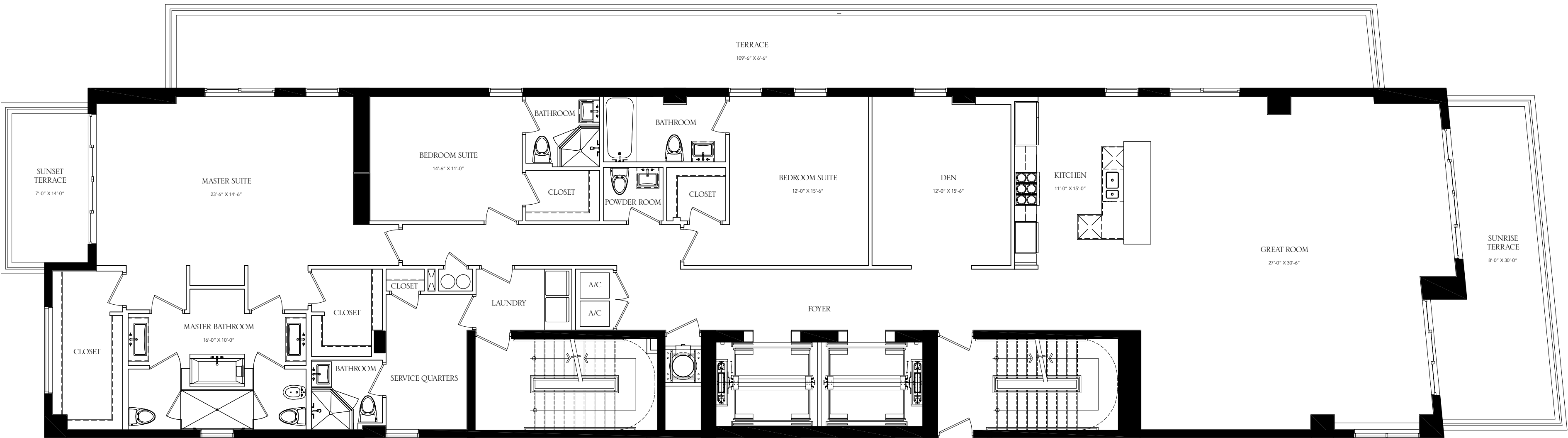
KEY PLAN - UNIT LOCATIONS

Note to Potential Purchasers of Ocean House, A Condominium: Any marketing materials you may have received, including this brochure, are preliminary in nature and are for promotional purposes only. Seller reserves the right to modify, revise or withdraw any or all of same in its sole discretion and without prior notice. Purchaser may not rely upon any such marketing materials in connection with the purchase of a Unit at Ocean House, A Condominium.



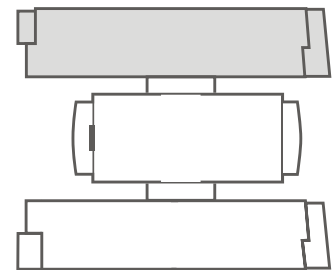
# GRAND RESIDENCE 501

4	BEDROOMS	5 1/2	BATHROOMS PLUS DEN
INTERIOR		3,511 SF / 326 M <sup>2</sup>	
BALCONIES		1,240 SF / 115 M <sup>2</sup>	
TOTAL		4,751 SF / 441 M <sup>2</sup>	



ATLANTIC OCEAN

ATLANTIC OCEAN



KEY PLAN - UNIT LOCATIONS

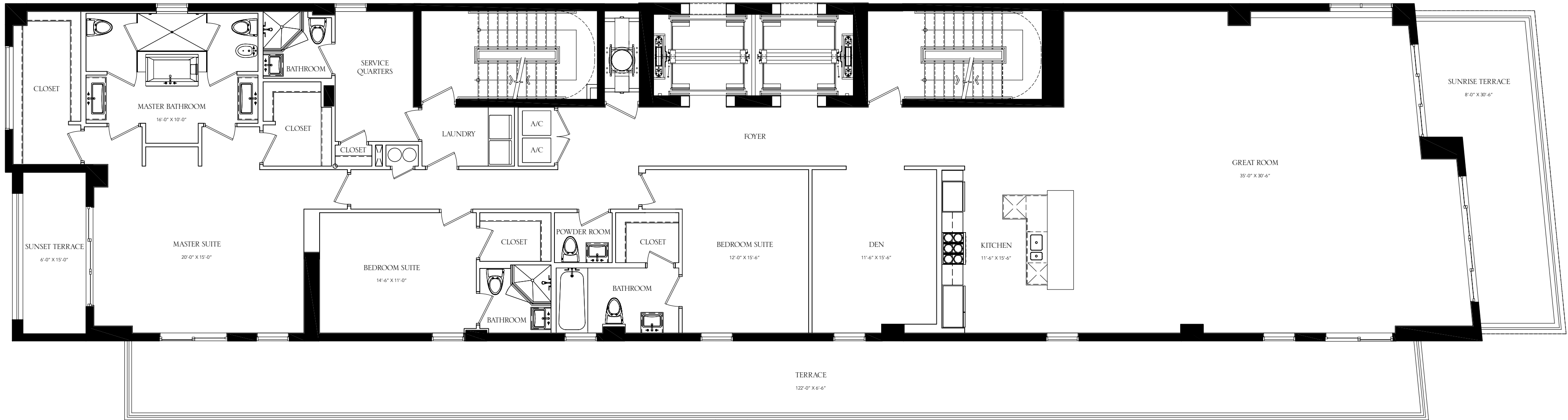
Note to Potential Purchasers of Ocean House, A Condominium: Any marketing materials you may have received, including this brochure, are preliminary in nature and are for promotional purposes only. Seller reserves the right to modify, revise or withdraw any or all of same in its sole discretion and without prior notice. Purchaser may not rely upon any such marketing materials in connection with the purchase of a Unit at Ocean House, A Condominium.



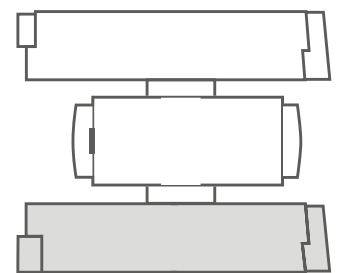


# GRAND RESIDENCE 503

4	BEDROOMS	5 1/2	BATHROOMS PLUS DEN
INTERIOR		3,728 SF / 346.35 M <sup>2</sup>	
BALCONIES		1,330 SF / 123.56 M <sup>2</sup>	
TOTAL		5,058 SF / 469.91 M <sup>2</sup>	



ATLANTIC OCEAN



ATLANTIC OCEAN



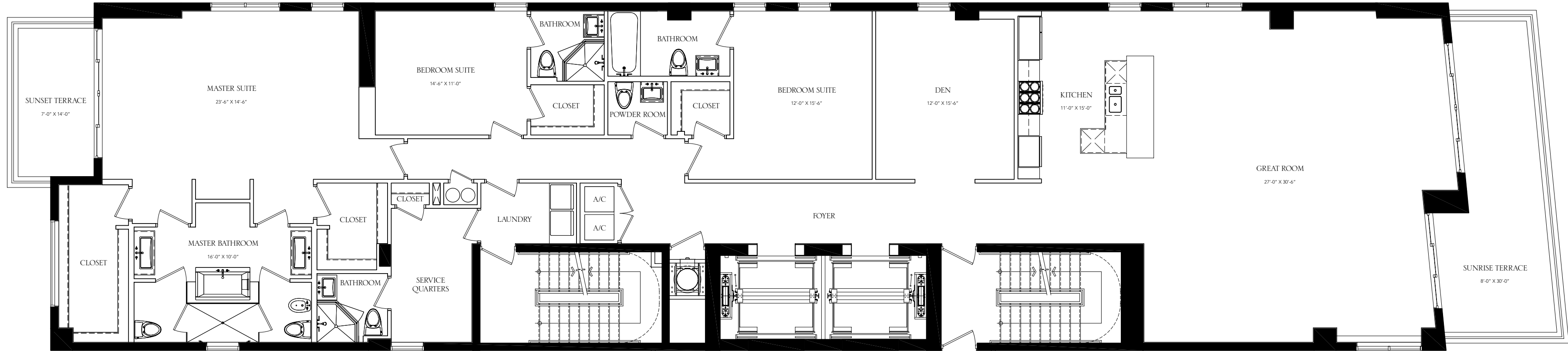
KEY PLAN - UNIT LOCATIONS

Note to Potential Purchasers of Ocean House, A Condominium: Any marketing materials you may have received, including this brochure, are preliminary in nature and are for promotional purposes only. Seller reserves the right to modify, revise or withdraw any or all of same in its sole discretion and without prior notice. Purchaser may not rely upon any such marketing materials in connection with the purchase of a Unit at Ocean House, A Condominium.

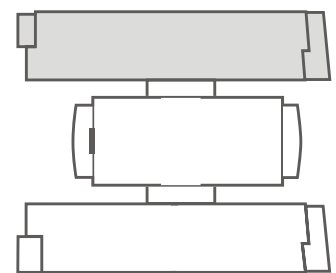


# GRAND RESIDENCE 601

4	BEDROOMS	5 1/2	BATHROOMS PLUS DEN
INTERIOR		3,511 SF / 326.18 M <sup>2</sup>	
BALCONIES		407 SF / 37.81 M <sup>2</sup>	
TOTAL		3,918 SF / 363.99 M <sup>2</sup>	



ATLANTIC OCEAN



KEY PLAN - UNIT LOCATIONS

ATLANTIC OCEAN

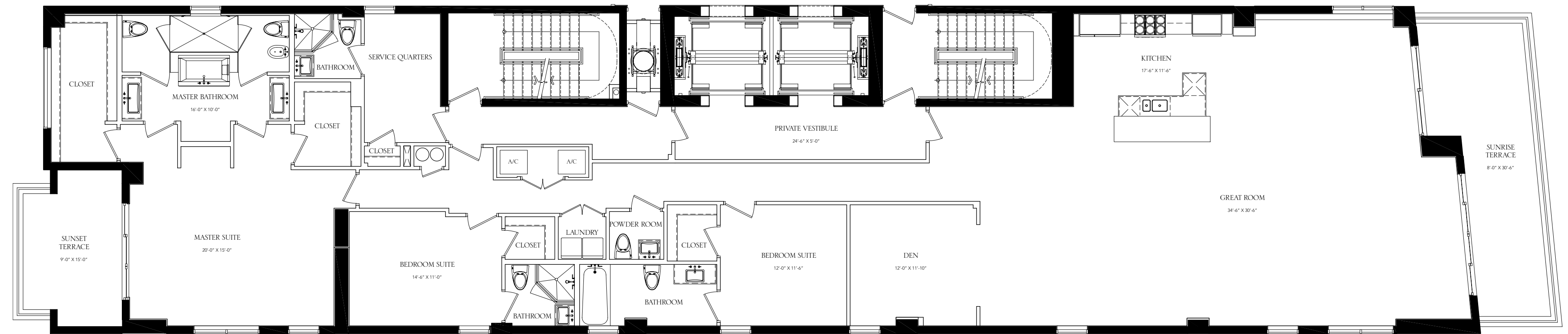
Note to Potential Purchasers of Ocean House, A Condominium: Any marketing materials you may have received, including this brochure, are preliminary in nature and are for promotional purposes only. Seller reserves the right to modify, revise or withdraw any or all of same in its sole discretion and without prior notice. Purchaser may not rely upon any such marketing materials in connection with the purchase of a Unit at Ocean House, A Condominium.



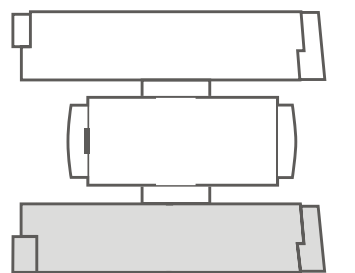


GRAND RESIDENCE 603

4	BEDROOMS	5 1/2	BATHROOMS PLUS DEN
INTERIOR SF		3,728 SF / 346 M <sup>2</sup>	
BALCONIES		446 SF / 41 M <sup>2</sup>	
TOTAL		4,174 SF / 387 M <sup>2</sup>	



ATLANTIC OCEAN



KEY PLAN - UNIT LOCATIONS

ATLANTIC OCEAN

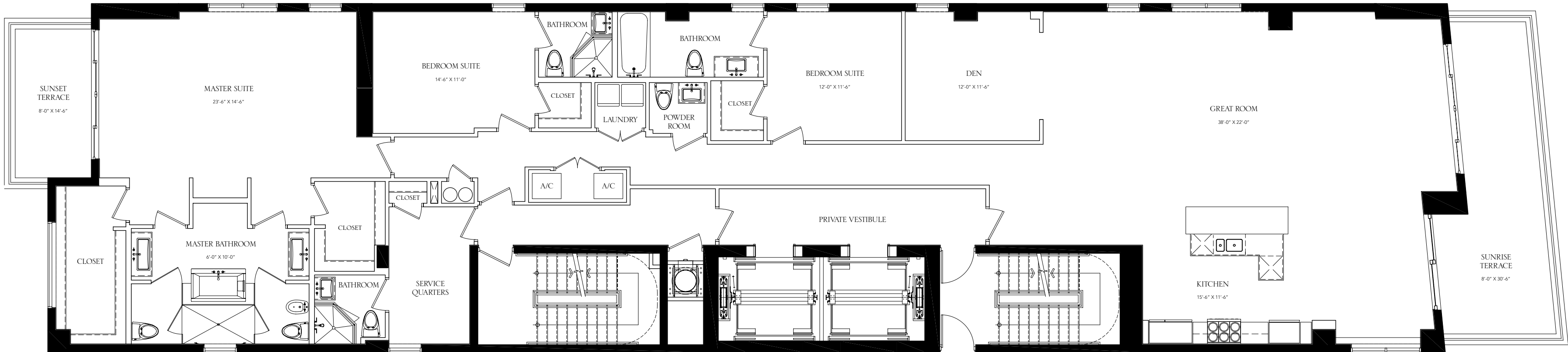
Note to Potential Purchasers of Ocean House, A Condominium: Any marketing materials you may have received, including this brochure, are preliminary in nature and are for promotional purposes only. Seller reserves the right to modify, revise or withdraw any or all of same in its sole discretion and without prior notice. Purchaser may not rely upon any such marketing materials in connection with the purchase of a Unit at Ocean House, A Condominium.



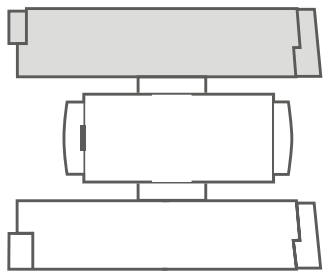
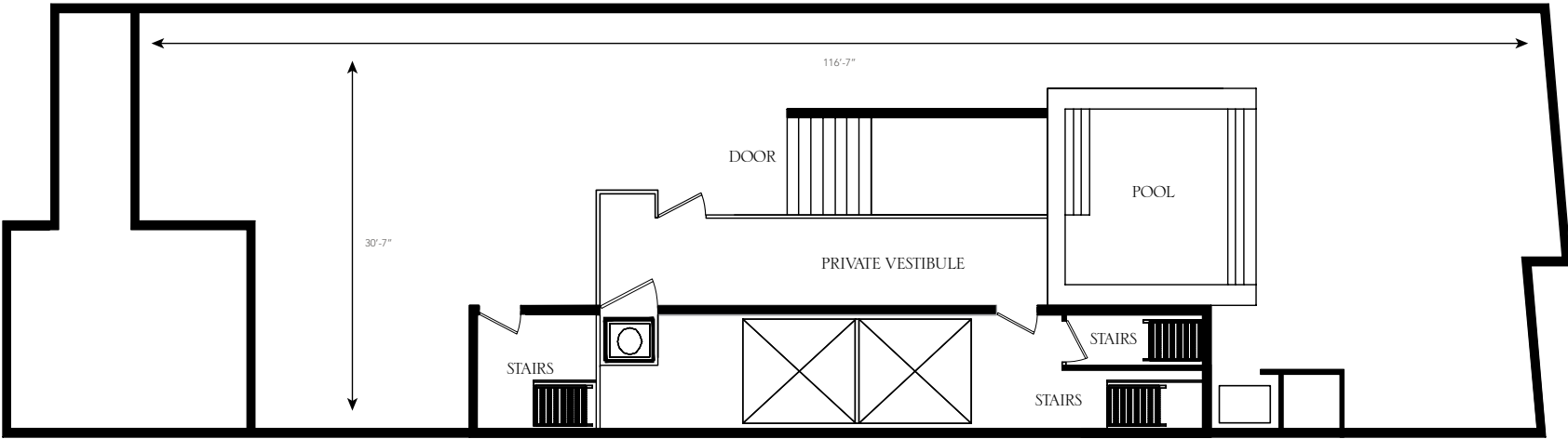
# GRAND RESIDENCE 701

4	BEDROOMS	5 1/2	BATHROOMS PLUS DEN
INTERIOR		3,511 SF / 326 M <sup>2</sup>	
BALCONIES		3,244 SF / 301 M <sup>2</sup>	
TOTAL		6,755 SF / 627 M <sup>2</sup>	

UPPER PLAN



ROOFTOP GARDEN



KEY PLAN - UNIT LOCATIONS

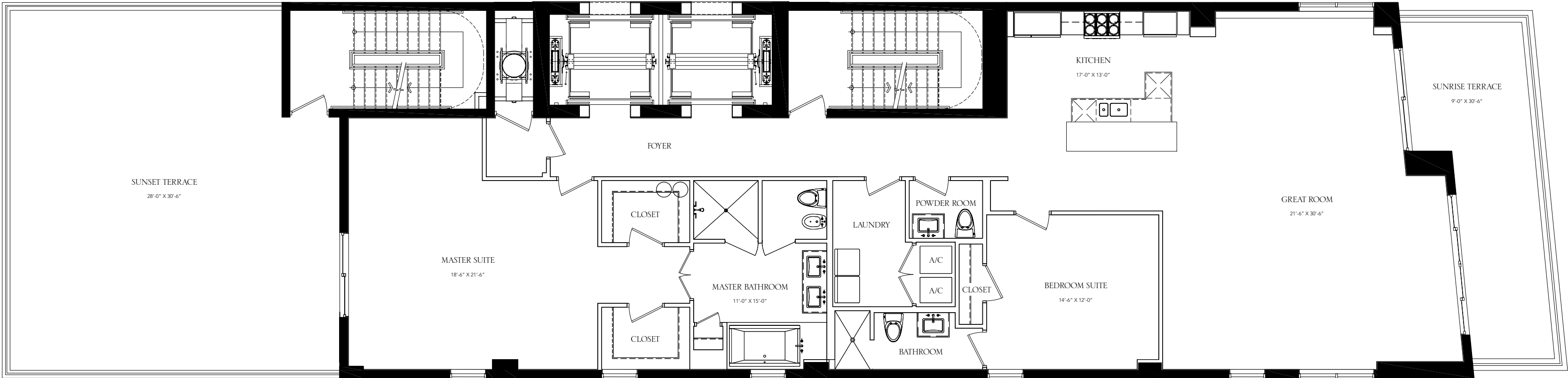
Note to Potential Purchasers of Ocean House, A Condominium: Any marketing materials you may have received, including this brochure, are preliminary in nature and are for promotional purposes only. Seller reserves the right to modify, revise or withdraw any or all of same in its sole discretion and without prior notice. Purchaser may not rely upon any such marketing materials in connection with the purchase of a Unit at Ocean House, A Condominium.



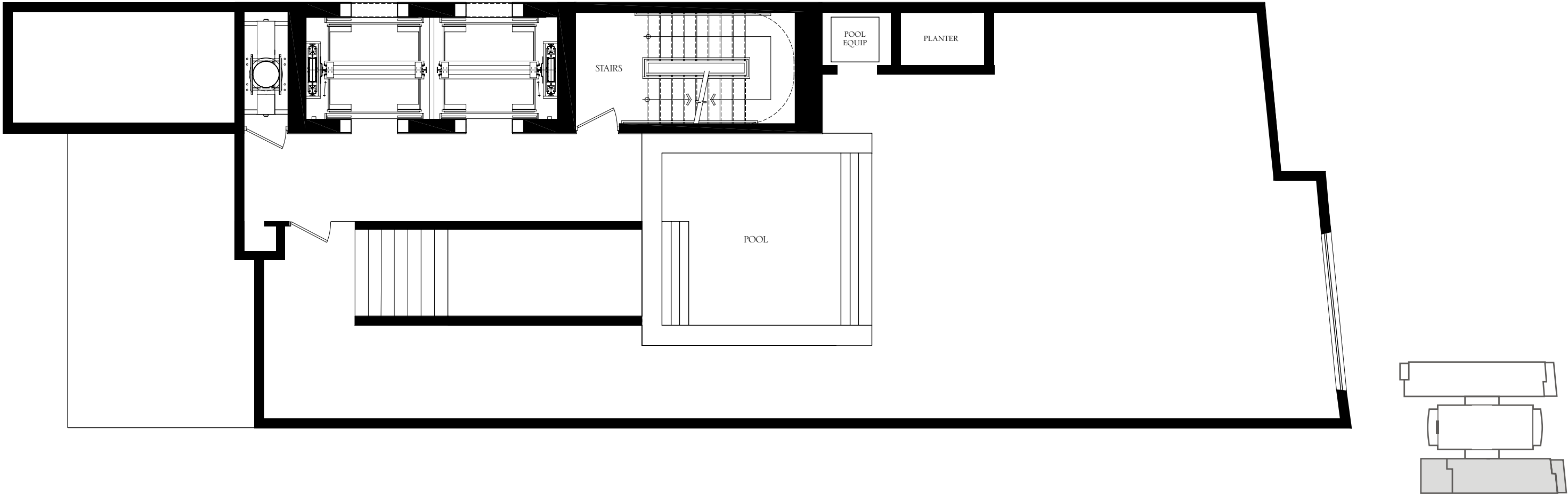
GRAND RESIDENCE 703

2	BEDROOMS	2 1/2	BATHROOMS
INTERIOR		2,489 SF / 231.24 M <sup>2</sup>	
BALCONIES		3,327 SF / 309.09 M <sup>2</sup>	
TOTAL		5,816 SF / 540.32 M <sup>2</sup>	

UPPER PLAN



ROOFTOP GARDEN



KEY PLAN - UNIT LOCATIONS

ATLANTIC OCEAN

ATLANTIC OCEAN

Note to Potential Purchasers of Ocean House, A Condominium: Any marketing materials you may have received, including this brochure, are preliminary in nature and are for promotional purposes only. Seller reserves the right to modify, revise or withdraw any or all of same in its sole discretion and without prior notice. Purchaser may not rely upon any such marketing materials in connection with the purchase of a Unit at Ocean House, A Condominium.